

## REAR MOUNTED WING PLOW SYSTEM



- The best partner to an underbody scraper
- Eliminates the added weight on the front axle created by a front mounted wing system
- No obstruction of the passenger window
- Unlimited access to passenger door at all time

### L1315 front post (installed in front of rear tires)

- Provided with torsion spring trip block

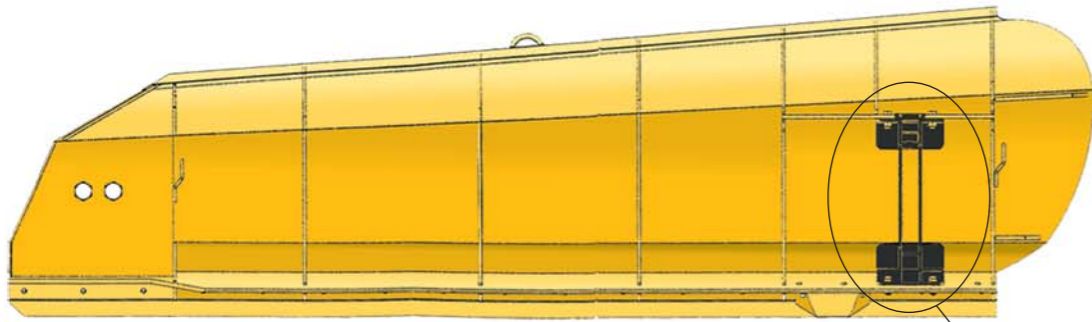
### L1400MR rear mounted attachment

- Wing lift operation: double acting cylinder provided with a mechanical floating between push arms

### Also available:

L1400HPA rear attachment (hydraulic push arms)

## WING PLOW



Push arm adaptor

## OPTIONS

- 3/16" thick (7 ga) moldboard
- Polymer moldboard liner
- Carbide blade and shoes
- Curb shoe
- Additional wear shoes

### Panel type moldboard:

- Adds structural strength to plow
- Provides breaking action to the snow load
- Eases snow ejection

- 6" x 4" x 5/8" blade support angle reinforced by 3/8" thick triangular gussets

### Pivoting bolt: 1 1/2", grade 8

- Lifting ring

### Multi-positions push arms adaptor:

- helps provide the correct push arms working angle

MODEL	MOLDBOARD THICKNESS	OVERALL LENGTH	HEIGHT		CUTTING EDGE	APPROX. WEIGHT
			INTAKE	DISCHARGE		
10W108R	10 ga	10'- 0" (120")	31"	39"	1/2" x 8" x 108"	675 lbs
11W120R	10 ga	11'- 0" (132")	31"	40"	1/2" x 8" x 120"	725 lbs
12W132R	10 ga	12'- 0" (144")	31"	41"	1/2" x 8" x 132"	825 lbs
13W144R	10 ga	13'- 0" (156")	32"	42 1/2"	1/2" x 8" x 144"	950 lbs

Other models and options available upon request.

**LAROCHELLE** products are warranted under published warranty. The company reserves the right under its product improvement policy to change construction or design of its product without notice.

LAROCHELLE EQUIPMENT INC. QUALITY MANAGEMENT SYSTEM IS ISO 9001: 2000 CERTIFIED.

**LAROCHELLE EQUIPMENT INC.**

Since 1956  
250, 2<sup>nd</sup> avenue, Quebec, P.Q., Canada, G1L 3A7  
Tel. : (418) 522-8222 • Fax : (418) 522-3115  
E-mail : phil@larochelle.ca • Internet : www.larochelle.ca

DISTRIBUTOR

# LAROCHELLE

ISO 9001 : 2000

Since 1956

# Wing plow systems.

## PATROL WING SYSTEM

### FOR WIDENING OPERATIONS

- All hydraulic system
- Requires minimum cab to body clearance
- Easy retrofit on spreader or dump truck

### L1324MA front post

- Low profile design
- 24" slide travel
- Floating position to allow wing to follow the contours of the road surface
- Provided with torsion spring trip block

### L1400M rear attachment

- Wing lift operation: double acting cylinder provided with a mechanical floating between push arms



## HYDRAULIC PUSH ARM SYSTEM

### CONTROL THE CLEARING WIDTH OF YOUR WING PLOW

### L1324MA front post

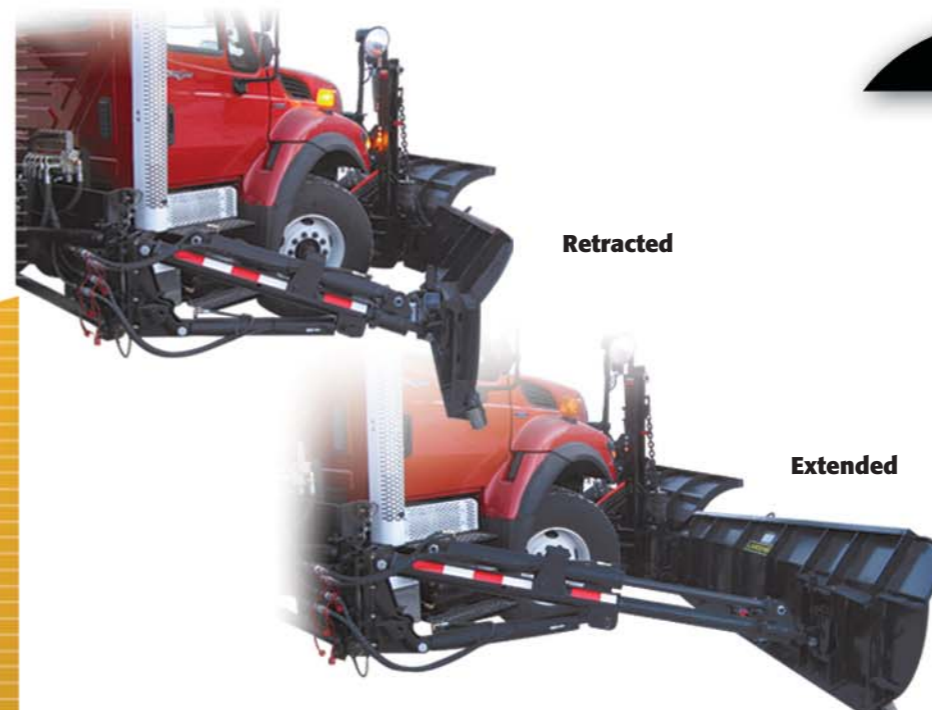
- Provided with the 4-8-30° High lift roll-over trip block

### Also available:

L1348 front post

### L1400HPA rear attachment

- The extendable wing arm system allows changing the clearing path on the go



Retracted

Extended

## DIRECT ACTING CYLINDER SHELVING SYSTEM



**For widening and shelving operations**

**A double acting cylinder is directly connected to the wing slide (no cables)**

### L1348 front post

- 48" slide travel
- Floating position to allow wing to follow the contours of the road surface
- Provided with torsion spring trip block

### L1436WR rear tower

- 36" slide travel
- Wing lift operation: double acting cylinder provided with a mechanical floating between push arms
- Provided with a frame mounted oil reservoir

### Also available:

- **L1436 rear tower**  
Provided with a structural oil reservoir for added support of the rear post

## CABLE-OPERATED SHELVING SYSTEM



**For widening and shelving operations**

**An hydraulic cylinder operates a cable and sheave arrangement**

### L1340 front post

- Low profile design
- 40" slide travel
- Cable/sheaves reduction system equipped with greasable bronze bushings
- Floating position to allow wing to follow the contours of the road surface
- Provided with torsion spring trip block

### Also available:

- **L1372 front post** (not shown)  
• 72" slide travel, designed for high shelving

### L1400 rear tower

- Low profile design: does not interfere with body cab protector
- 36" slide travel
- Cable/sheaves reduction system equipped with greasable bronze bushings
- Provided with a structural oil reservoir for added support of the rear post

### Also available:

- **L1454 rear tower** (not shown)  
54" slide travel, designed for high shelving

### ADVANTAGES

- Constant lifting speed: reduces risks of damaging the truck mirror, muffler or door
- Eliminates bending stresses to upper wing push arm resulting from a cylinder operated wing lift system
- Easy adjustment of the wing carry and floating position through the cable wire clip

## OPTIONAL EQUIPMENT

### Short push arm set

- This set of push arms is fabricated 20" shorter than our regular set
- It is ideal for narrower roads



### 4-8-30° High lift roll-over trip block

- Allows 4" upward and 8" backward at 30° clearance
- Adjustable recoil force through a rubber compression spring



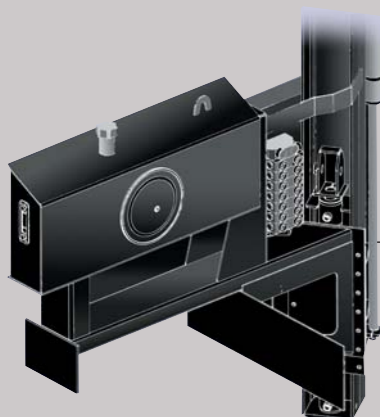
### Wing travel positioner

- Improves driver's visibility by repositioning the wing below the passenger window in the carry position (for L1400M and L1436: manual or pneumatic type) (for L1400: hydraulic type)



## EXCLUSIVE FEATURES

Some illustrations may display accessories only available as options.



### Structural oil reservoir 40 U.S. gal (150 liters)

- Provides support to the rear tower
- Designed to host sectional valves in an enclosed cabinet
- Fall-off type top construction
- Breather cap with filler strainer
- Large 12" dia. cleaning cover
- Oil sight gauge

### Bolted flange connection



- All Larochelle front posts and rear towers are designed with a bolted flange connection, far superior than a welded construction design
- provides quick and easy replacement in case of accident
- allows complete removal after winter season

### Torsion spring trip block



- Protects wing plow against road obstacles
- Adjustable recoil force of the torsion spring
- Engineered for easy removal of wing plow